

tvsvdesign
 THOMPSON, VENTURINI, STAMBACK & ASSOCIATES, INC.
TUCK HINTON ARCHITECTS
MOODY-NOLAN, INC.
 ARCHITECTURE • CIVIL ENGINEERING • INTERIOR ARCHITECTURE

KEYNOTE LEGEND

DIVISION 06 - FINISHES
 06 200 AC SYSTEM SHOWN (SEE S12-601)
 06 201 AC SYSTEM SHOWN (SEE S12-601)
 06 202 AC SYSTEM SHOWN (SEE S12-601)

REFLECTED CEILING PLAN LEGEND

KEY PLAN

DEMONBREUN

01	02	03	04	05
06	07	08	09	10
11	12	13	14	15
16	17	18	19	20

8TH AVENUE
5TH AVENUE
KOREAN VETERANS BLVD

MUSIC CITY CENTER
 NASHVILLE, TENNESSEE

MOODY-NOLAN, INC.
 ARCHITECTURE • CIVIL ENGINEERING • INTERIOR ARCHITECTURE

KEYNOTE LEGEND

DIVISION 06 - FINISHES
 06 200 AC SYSTEM SHOWN (SEE S12-601)
 06 201 AC SYSTEM SHOWN (SEE S12-601)
 06 202 AC SYSTEM SHOWN (SEE S12-601)

REFLECTED CEILING PLAN LEGEND

KEY PLAN

DEMONBREUN

01	02	03	04	05
06	07	08	09	10
11	12	13	14	15
16	17	18	19	20

8TH AVENUE
5TH AVENUE
KOREAN VETERANS BLVD

MUSIC CITY CENTER
 NASHVILLE, TENNESSEE

LEVEL 4 - UPPER MEETING ROOM
MEZZ. RCP - ZONE 20

A3-420

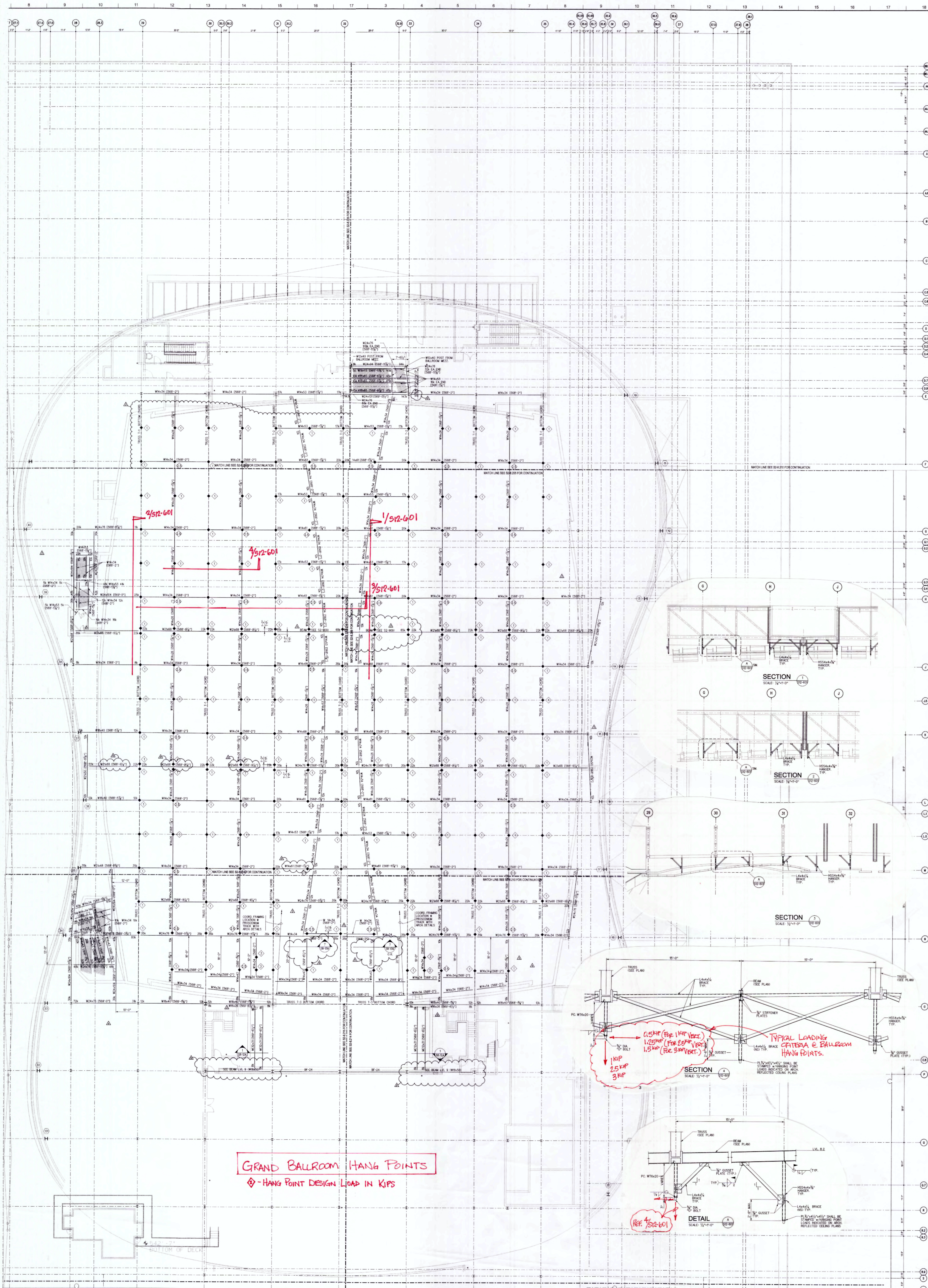
RELEASED FOR CONSTRUCTION 06/28/10

PATTERN & SHADING LEGEND

UPPER MEETING ROOM MEZZ. RCP - ZONE 20

PATTERN & SHADING LEGEND

A3-420



KEYNOTE LEGEND

TOP OF STEEL IS NOTED ON PLAN IN BRACKETS []
◆◆ INDICATES MOMENT CONNECTION
◆-◆ INDICATES BEAM CAMBER IN INCHES
◆ INDICATES FACTORED BEAM END REACTIONS
◆ INDICATES FACTORED BEAM END REACTIONS ON THIS PLAN IN BRACKETS []
BF-1 INDICATES BRACED FRAME TYPE (SEE BRACE AND ANY ADDITIONAL SHEETS IN THAT SHEET SERIES FOR DIAGRAM)
◆ INDICATES FIELD SPACE
◆ INDICATES POINT LOAD (CAN BE STAMPED ON SUPPORT MEMBER INDICATED LOAD IN KIPS)

PLAN NOTES

TOP OF STEEL IS NOTED ON PLAN IN BRACKETS []

◆◆ INDICATES MOMENT CONNECTION

◆-◆ INDICATES BEAM CAMBER IN INCHES

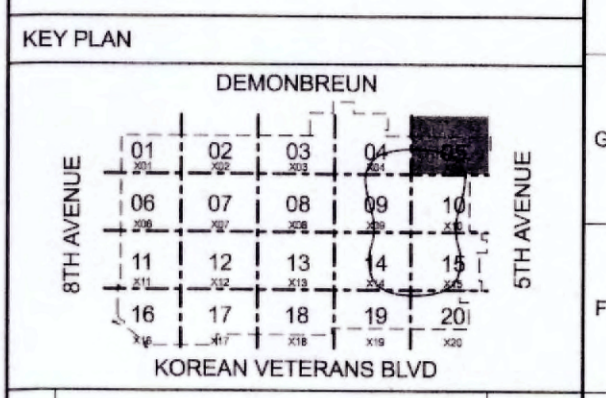
◆ INDICATES FACTORED BEAM END REACTIONS

◆ INDICATES FACTORED BEAM END REACTIONS ON THIS PLAN IN BRACKETS []

BF-1 INDICATES BRACED FRAME TYPE (SEE BRACE AND ANY ADDITIONAL SHEETS IN THAT SHEET SERIES FOR DIAGRAM)

◆ INDICATES FIELD SPACE

◆ INDICATES POINT LOAD (CAN BE STAMPED ON SUPPORT MEMBER INDICATED LOAD IN KIPS)



NO.	DESCRIPTION	DATE
1	ISSUED FOR PERMIT	08/21/15
2	ISSUED FOR CONSTRUCTION	08/21/15
3	ISSUED FOR CONSTRUCTION	08/21/15
4	ISSUED FOR CONSTRUCTION	08/21/15
5	ISSUED FOR CONSTRUCTION	08/21/15

KEYNOTE LEGEND

TOP OF STEEL IS NOTED ON PLAN IN BRACKETS []
◆◆ INDICATES MOMENT CONNECTION
◆-◆ INDICATES BEAM CAMBER IN INCHES
◆ INDICATES FACTORED BEAM END REACTIONS
◆ INDICATES FACTORED BEAM END REACTIONS ON THIS PLAN IN BRACKETS []
BF-1 INDICATES BRACED FRAME TYPE (SEE BRACE AND ANY ADDITIONAL SHEETS IN THAT SHEET SERIES FOR DIAGRAM)
◆ INDICATES FIELD SPACE
◆ INDICATES POINT LOAD (CAN BE STAMPED ON SUPPORT MEMBER INDICATED LOAD IN KIPS)

PLAN NOTES

TOP OF STEEL IS NOTED ON PLAN IN BRACKETS []

◆◆ INDICATES MOMENT CONNECTION

◆-◆ INDICATES BEAM CAMBER IN INCHES

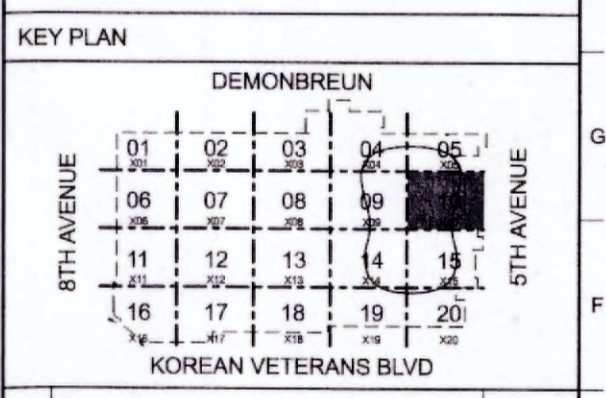
◆ INDICATES FACTORED BEAM END REACTIONS

◆ INDICATES FACTORED BEAM END REACTIONS ON THIS PLAN IN BRACKETS []

BF-1 INDICATES BRACED FRAME TYPE (SEE BRACE AND ANY ADDITIONAL SHEETS IN THAT SHEET SERIES FOR DIAGRAM)

◆ INDICATES FIELD SPACE

◆ INDICATES POINT LOAD (CAN BE STAMPED ON SUPPORT MEMBER INDICATED LOAD IN KIPS)



NO.	DESCRIPTION	DATE
1	ISSUED FOR PERMIT	08/21/15
2	ISSUED FOR CONSTRUCTION	08/21/15
3	ISSUED FOR CONSTRUCTION	08/21/15
4	ISSUED FOR CONSTRUCTION	08/21/15
5	ISSUED FOR CONSTRUCTION	08/21/15

KEYNOTE LEGEND

TOP OF STEEL IS NOTED ON PLAN IN BRACKETS []
◆◆ INDICATES MOMENT CONNECTION
◆-◆ INDICATES BEAM CAMBER IN INCHES
◆ INDICATES FACTORED BEAM END REACTIONS
◆ INDICATES FACTORED BEAM END REACTIONS ON THIS PLAN IN BRACKETS []
BF-1 INDICATES BRACED FRAME TYPE (SEE BRACE AND ANY ADDITIONAL SHEETS IN THAT SHEET SERIES FOR DIAGRAM)
◆ INDICATES FIELD SPACE
◆ INDICATES POINT LOAD (CAN BE STAMPED ON SUPPORT MEMBER INDICATED LOAD IN KIPS)

PLAN NOTES

TOP OF STEEL IS NOTED ON PLAN IN BRACKETS []

◆◆ INDICATES MOMENT CONNECTION

◆-◆ INDICATES BEAM CAMBER IN INCHES

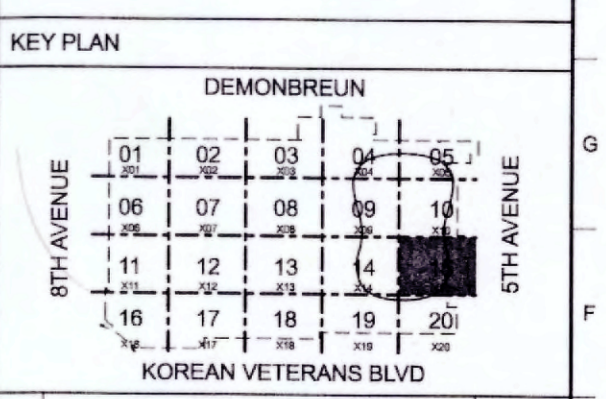
◆ INDICATES FACTORED BEAM END REACTIONS

◆ INDICATES FACTORED BEAM END REACTIONS ON THIS PLAN IN BRACKETS []

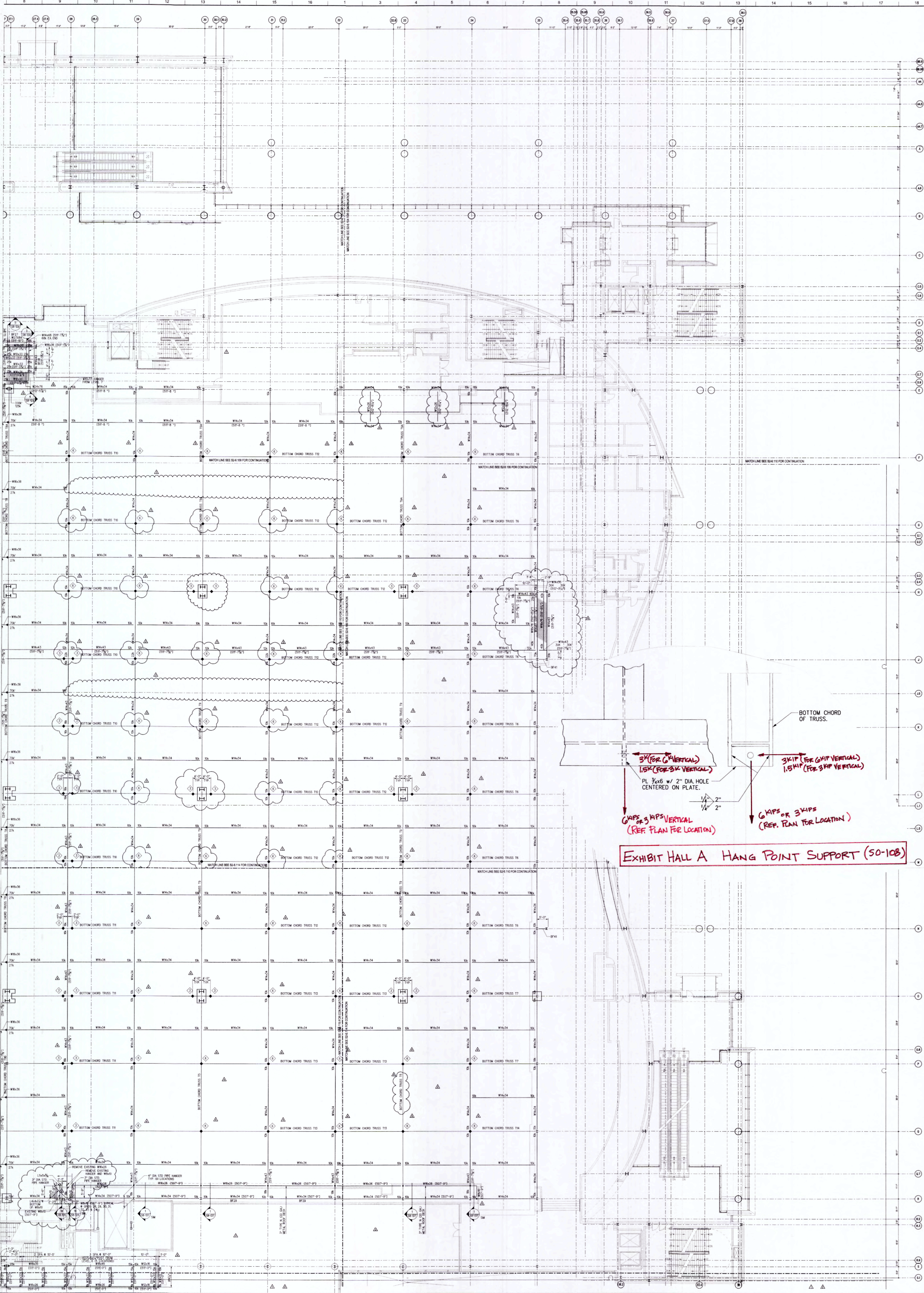
BF-1 INDICATES BRACED FRAME TYPE (SEE BRACE AND ANY ADDITIONAL SHEETS IN THAT SHEET SERIES FOR DIAGRAM)

◆ INDICATES FIELD SPACE

◆ INDICATES POINT LOAD (CAN BE STAMPED ON SUPPORT MEMBER INDICATED LOAD IN KIPS)



NO.	DESCRIPTION	DATE
1	ISSUED FOR PERMIT	08/21/15
2	ISSUED FOR CONSTRUCTION	08/21/15
3	ISSUED FOR CONSTRUCTION	08/21/15
4	ISSUED FOR CONSTRUCTION	08/21/15
5	ISSUED FOR CONSTRUCTION	08/21/15



tvsvdesign

TUCK·HINTON ARCHITECTS

MOODY·NOLAN, INC.

ROSS BRYAN ASSOCIATES, INC.

KEYNOTE LEGEND

PLAN NOTES

KEY PLAN

DEMOMBREUN

01	02	03	04
05	06	07	08
09	10	11	12
13	14	15	16
17	18	19	20

8TH AVENUE

5TH AVENUE

KOREAN VETERANS BLVD

MUSIC CITY CENTER

LEVEL 6.1 - EXHIBIT HALL HANG PTS. & OPERABLE WALL SUPPORT FRAMING PLAN - ZONE 15

MOODY·NOLAN, INC.

ROSS BRYAN ASSOCIATES, INC.

KEYNOTE LEGEND

PLAN NOTES

KEY PLAN

DEMOMBREUN

01	02	03	04
05	06	07	08
09	10	11	12
13	14	15	16
17	18	19	20

8TH AVENUE

5TH AVENUE

KOREAN VETERANS BLVD

EXHIBIT HALL A HANG POINT SUPPORT (50-108)

3" (FOR 6" VERTICAL)
1.5" (FOR 3" VERTICAL)
PL 3/8x6 w/ 2" DIA HOLE
CENTERED ON PLATE.

3" (FOR 6" VERTICAL)
1.5" (FOR 3" VERTICAL)

6" HPS OR 3" HPS
(REF. PLAN FOR LOCATION)

1/4" 2"

1/4" 2"

BOTTOM CHORD OF TRUSS.

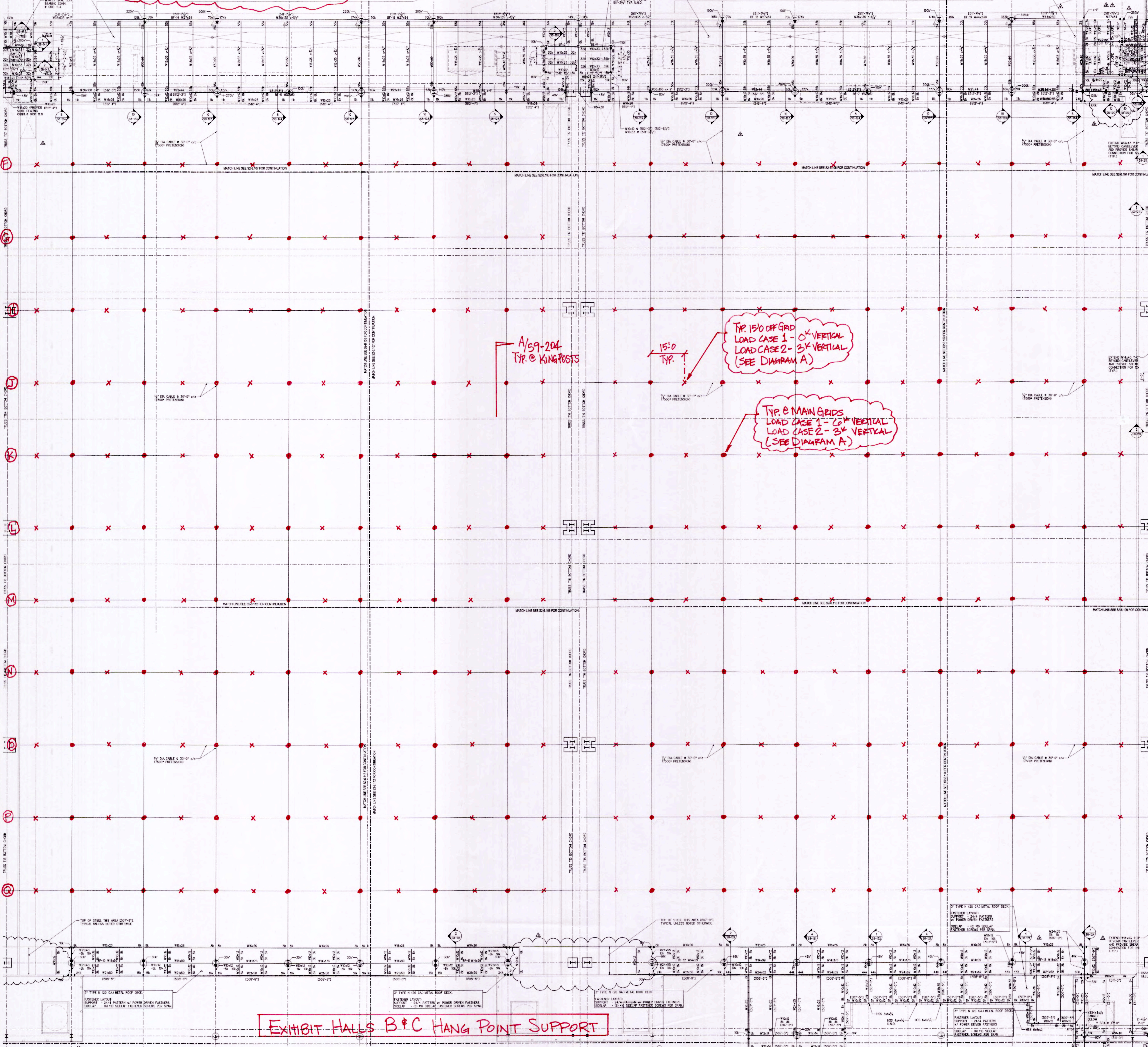
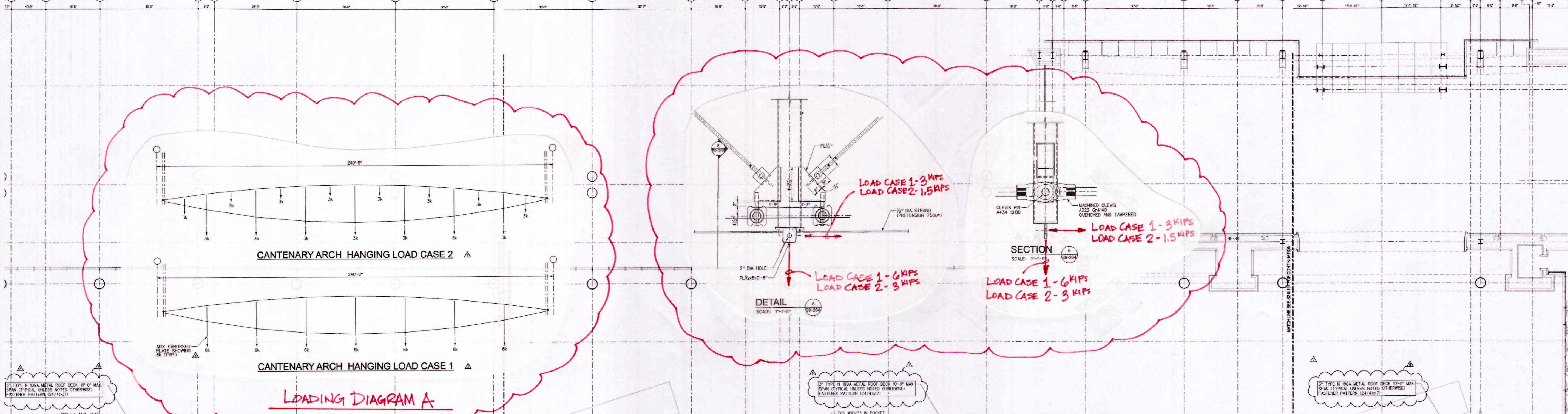


EXHIBIT HALLS B & C HANG POINT SUPPORT

